

SAVAGE A40 PAPR

Professional automatic welding helmet with NIOSH-approved PAPR



The Savage A40 PAPR pairs the advanced features of the Savage A40 welding helmet with a powerful PAPR system designed to filter 99.9% of fine particles from the air during routine procedures. As a fully featured system, welders can now experience optimal True Color with 1/1/1/2 class optical view of the weld pool through a large 100 x 50 mm (3.93 x 1.96 in.) ADF. The external grind button and knob make it simple to adjust the shade control from 9-13, allowing an easy switch for different welding processes. The Savage A40 PAPR NIOSH-approved welding system represents the features welders need to get the job done quickly, accurately and safely.

Welding Process

- Oxy-Fuel Cutting
- Plasma Cutting
- Grinding
- Welding, GMAW (MIG/MAG)
- Welding, GTAW (TIG)
- Welding, PAW -Plasma Arc Welding
- Welding, SMAW/MMA (Stick)

- NIOSH-approved PAPR filtration system delivers three-setting adjustable flow from 170 to 230 liters per minute
- Convenient push-button interface with easy to read LCD display for PAPR adjustment
- High efficiency 2 stage filtration system with spark arrestor for added safety
- LCD display indicating fan speed, flow rate and battery charge level with additional audible alert for low battery
- High quality shielded air tube with simple connections
- Fully adjustable PAPR harness and multi-point helmet headgear adjustment for total comfort
- Four sensor ADF with adjustable shade, sensitivity and delay controls to dial in the precise darkness and reaction speed



Visit esab.com for more information.

SAVAGE A40 PAPR

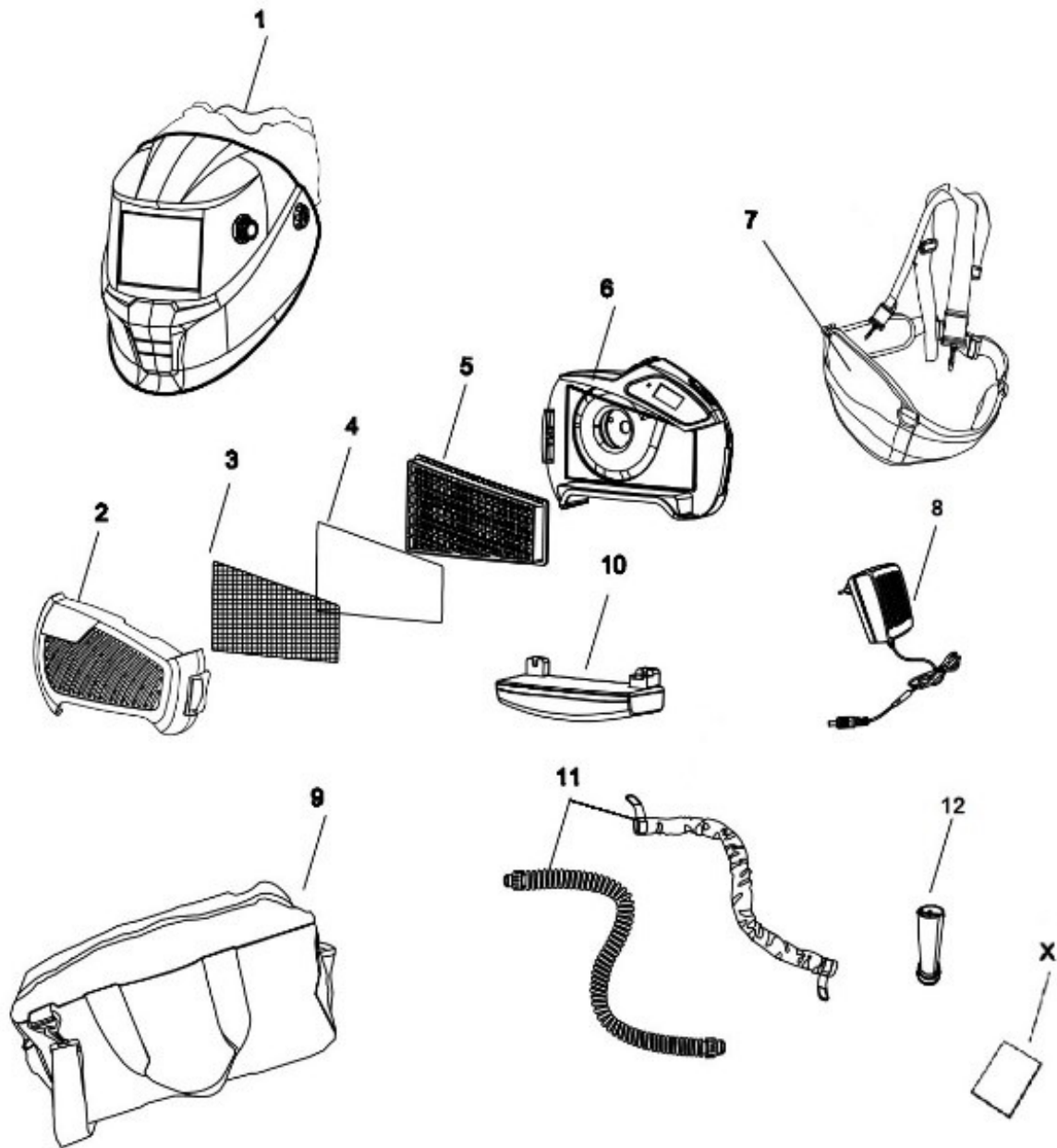
Specifications	
Cartridge Dimensions	110 x 90 x 7.8 mm (4.33 x 3.54 x 0.3 in.)
Viewing Area	100 x 50 mm (3.93 x 1.96 in.)
Lens Shade	DIN 4, 9-13 Automatic
Power Supply (helmet)	Replaceable CR2450 battery with solar cell backup. Alerts when low battery.
Power Supply (PAPR)	4400mAh Li-Ion rechargeable battery (charger included). Alerts when low battery.
Sensors	4
Switch Time, from Dark to Light	0.1-0.9 s
Switch Time, at 23°C (73°C)	0.07 ms
Classification	1/1/1/2
Standards	NIOSH, ANSI Z87.1, CSA Z94.3, CE EN379, EN175, & AS/NZS 1338.1
Weight	1350 g (2.97 lbs)

Ordering Information	
Savage A40 9-13 Black, with NIOSH PAPR	0700002400

Options & Accessories	
Breathing Tube 1 m (3.3 ft) w/ Cloth NIOSH-PAPR	0700002409
Magnifying Lens +1.0 Diopter	0700000084
Magnifying Lens +1.5 Diopter	0700000085
Magnifying Lens +2.0 Diopter	0700000086
Magnifying Lens +2.5 Diopter	0700000087
Proban Hood	0000593269

SAVAGE A40 PAPR

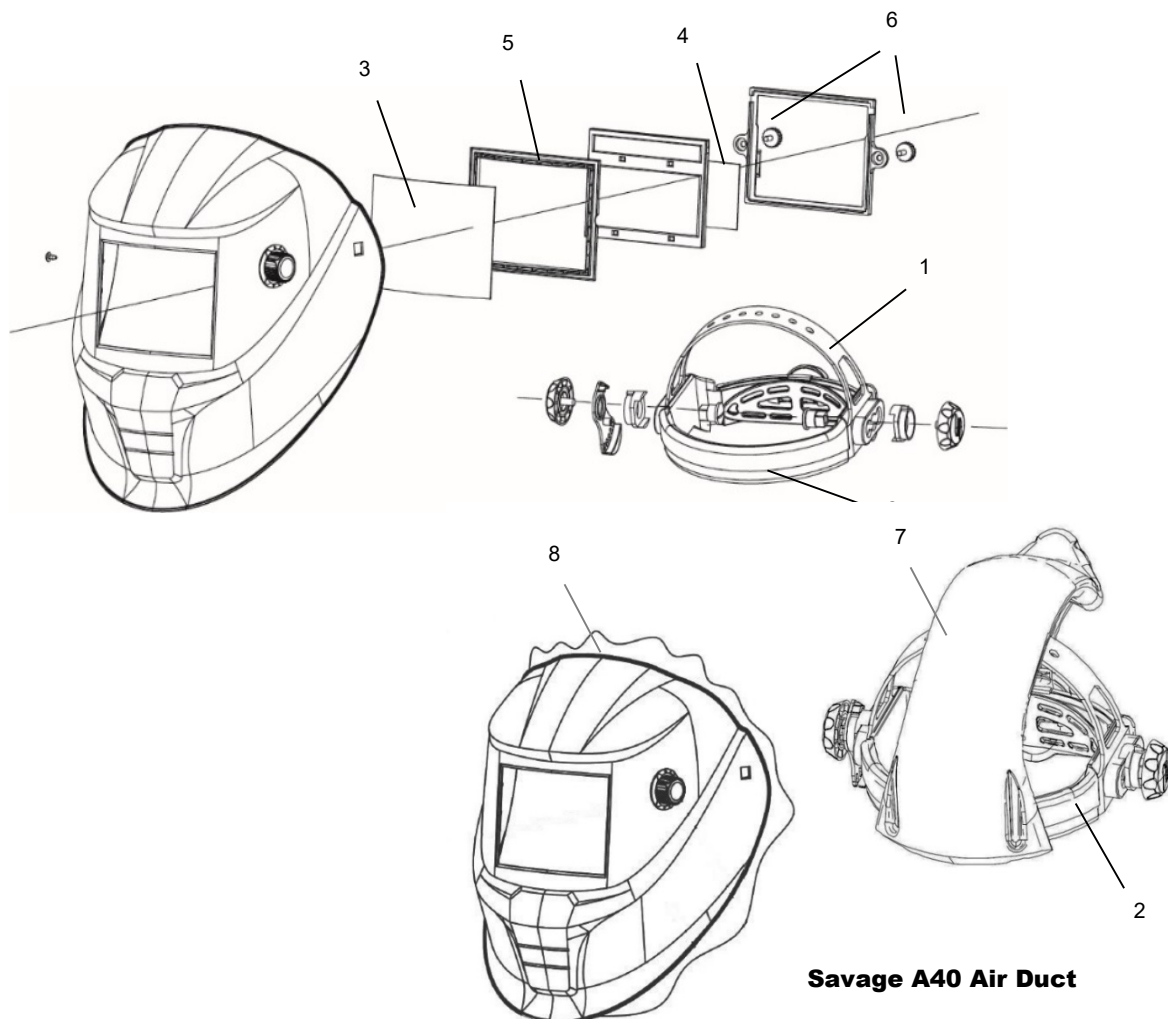
Wear and Spare Parts – PAPR System		
1	Savage A-40 9-13 Helmet Prepared for PAPR	0700500400
2	Filter Cover NIOSH-PAPR	0700002402
3	Spark Arrestor NIOSH- PAPR	0700002405
4	Pre-Filter NIOSH- PAPR (5)	0700002404
5	Main Filter NIOSH - PAPR	0700002403
6	Blower Unit NIOSH- PAPR	0700002406
7	Waist Belt w/ Shoulder Strap NIOSH-PAPR	0700002411
8	Battery Charger NIOSH- PAPR	0700002414
9	Carrier Bag NIOSH-PAPR	0700002415
10	Standard Battery NIOSH - PAPR	0700002407
11	Breathing Tube (1M) w/ Cloth NIOSH-PAPR	0700002409
12	Portable Air Flow Tester NIOSH- PAPR	0700002413



SAVAGE A40 PAPR

Wear and Spare Parts – Savage ADF Helmet

1	Head Gear	0700000483
2	Sweat Band	0700000414
3	Front Cover Lens	0700000010
4	Inside Cover Lens	0700000482
5	ADF Cradle	0700000418
6	Lens Retainer with Screw	0700000419
7	Head Gear with Air Duct	0700500404
8	Face Seal	0700500405



Savage A40 Air Duct



ESAB / esab.com

